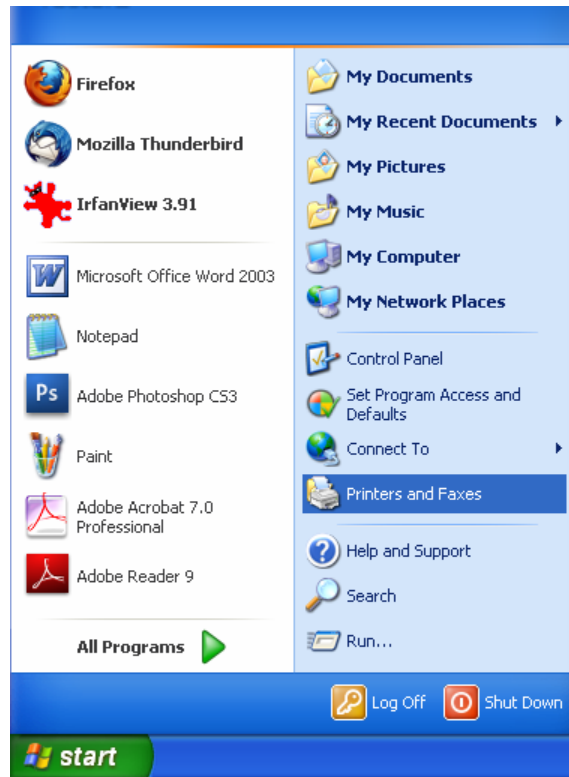


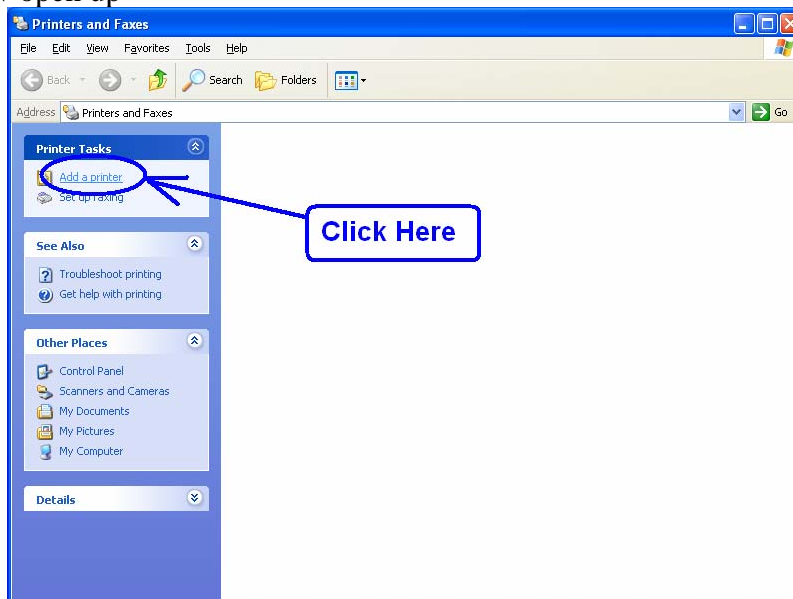
XP “Printer Adapter” instructions:

- 1.) Attach your printer to the “Inland Printer Cable”
- 2.) Power-on your printer
- 3.) Power-on your computer

Click “Start” → Printers and Faxes



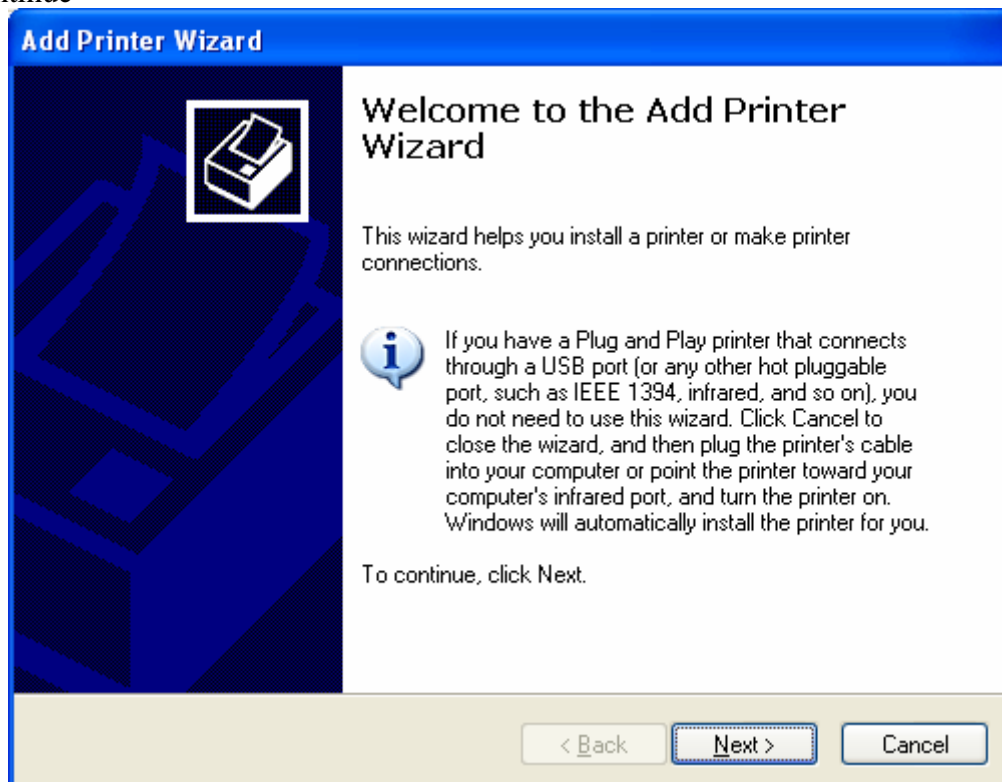
You should see this window open up



When you see this wizard open up, click “Next”



Click “Next” to continue




Please make sure that the “Local printer attached to this computer” is checked only. All other boxes should be unchecked. Click “Next” to continue.

Add Printer Wizard

Local or Network Printer
The wizard needs to know which type of printer to set up.

Select the option that describes the printer you want to use:

- Local printer attached to this computer
- Automatically detect and install my Plug and Play printer
- A network printer, or a printer attached to another computer
- A Bluetooth printer
(This option will attempt to install all Bluetooth printers nearby.)

 To set up a network printer that is not attached to a print server, use the "Local printer" option.

< Back Next > Cancel


Add Printer Wizard

Select a Printer Port
Computers communicate with printers through ports.

Select the port you want your printer to use. If the port is not listed, you can create a new port.

Use the following port: LPT1: (Recommended Printer Port)

Note: Most computers use the LPT1: port to communicate with a local printer. The connector for this port should look something like this:

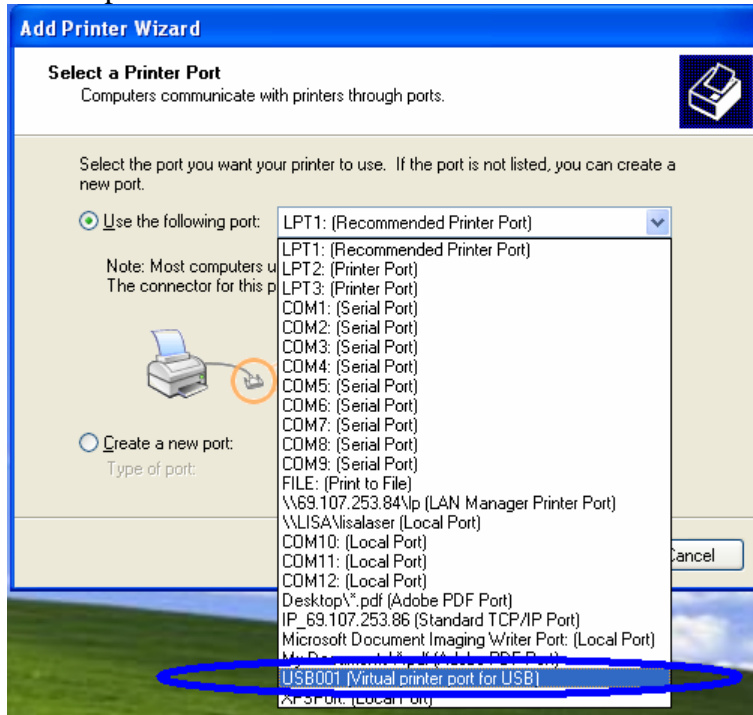


Click this arrow

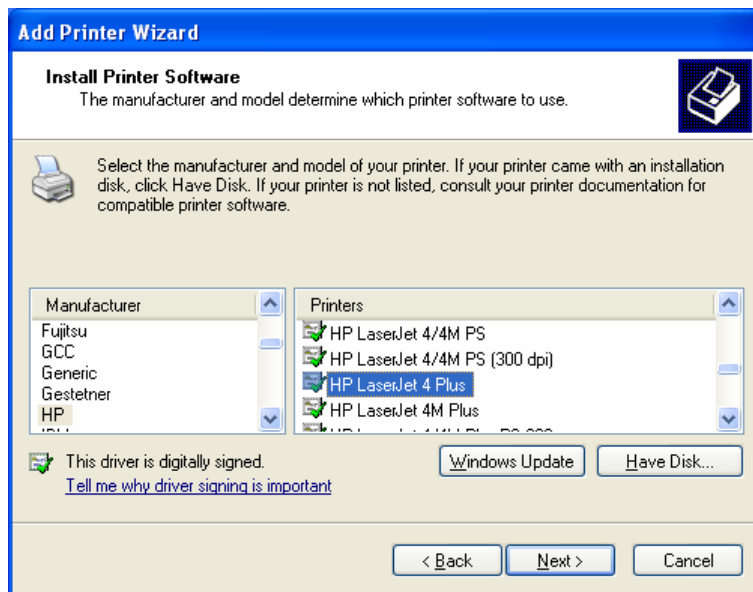
Create a new port:
Type of port: Adobe PDF Port

< Back Next > Cancel

Please select “USB001” from the drop-down list.



Select the brand of printer you have on the left pane, then select the model on the right pane. If you do not see your printer on this list, go to the printer’s manufactures website and download the drivers for your printer. Click “Next” to continue.



You may name the printer so you can find it easier on a list. Click “Next” to continue,

Add Printer Wizard

Name Your Printer
You must assign a name to this printer.

Type a name for this printer. Because some programs do not support printer and server name combinations of more than 31 characters, it is best to keep the name as short as possible.

Printer name:

Do you want to use this printer as the default printer?

Yes
 No

< Back Next > Cancel

You don't need to change this. Click “Next” to continue

Add Printer Wizard

Printer Sharing
You can share this printer with other network users.

If you want to share this printer, you must provide a share name. You can use the suggested name or type a new one. The share name will be visible to other network users.

Do not share this printer
 Share name:

< Back Next > Cancel

Please print a test page to confirm printer settings. Click “Next” to continue.

Add Printer Wizard

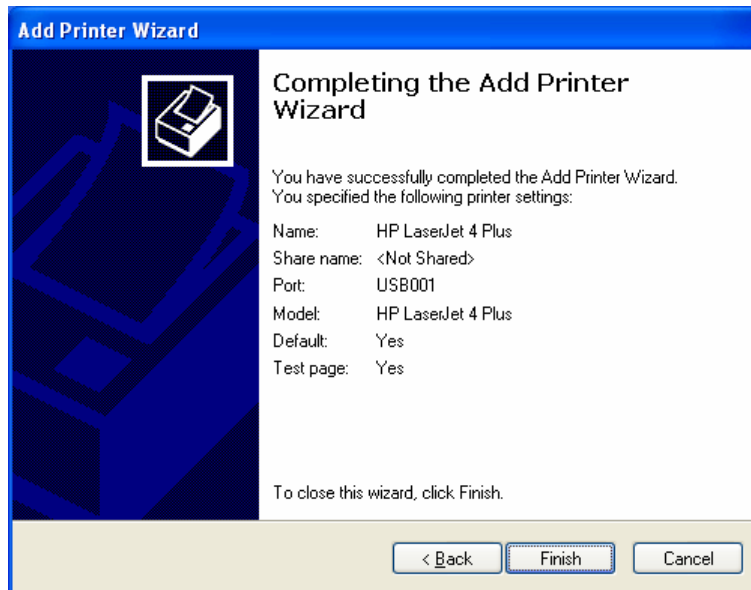
Print Test Page
To confirm that the printer is installed properly, you can print a test page.

Do you want to print a test page?

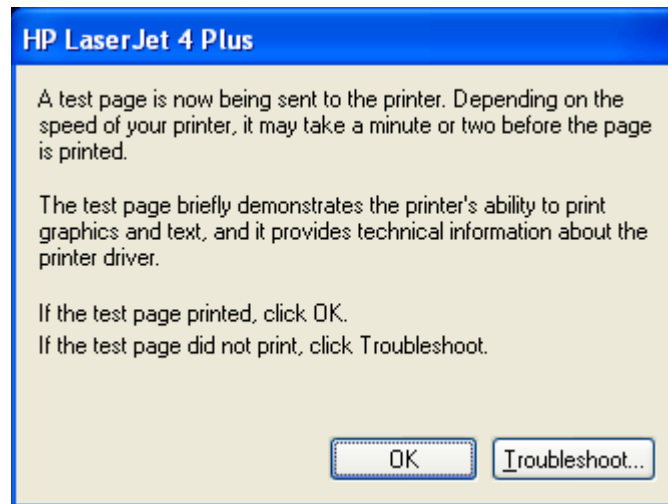
Yes
 No

< Back Next > Cancel

Click “Finish”



You should see a similar popup window. This is confirming that you see the test page. Press “OK” if you see the test page on your printer.



You should see your printer in the “Printers and Faxes” list.

