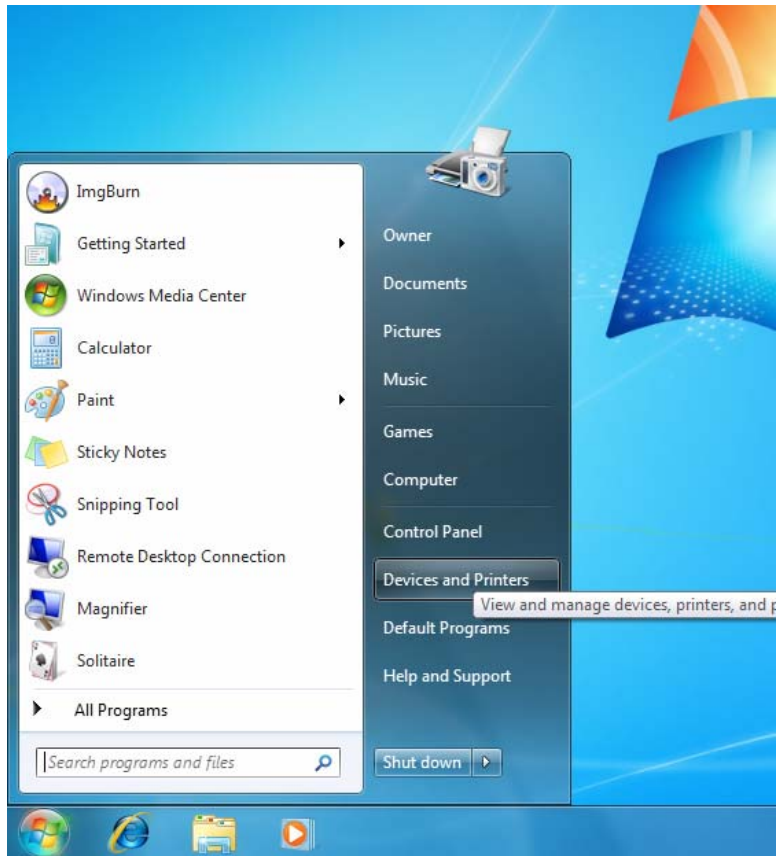


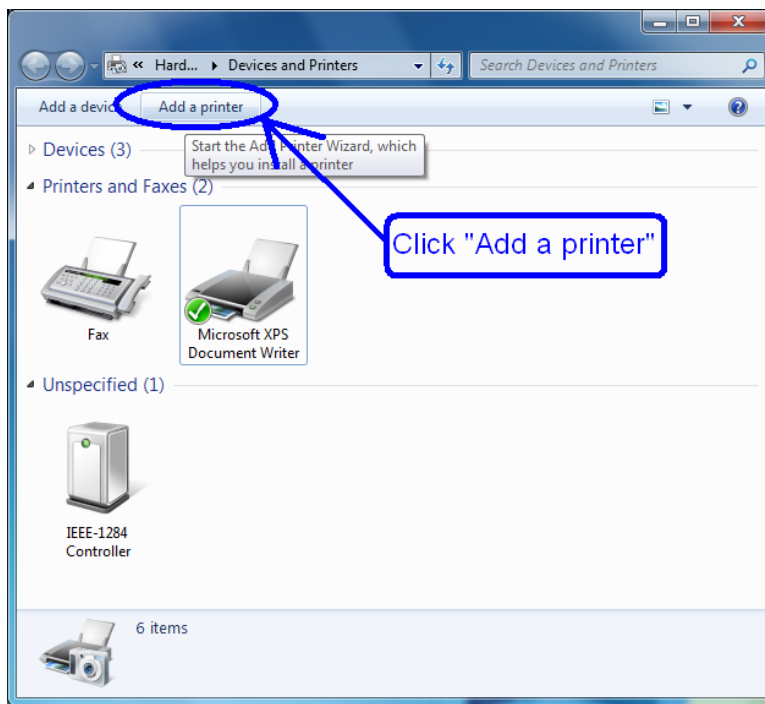
Windows 7 “Printer Adapter Cable” instructions:

- 1.) Attach your printer to the “Inland LPT USB Cable”
- 2.) Power-on your printer
- 3.) Power-on your computer

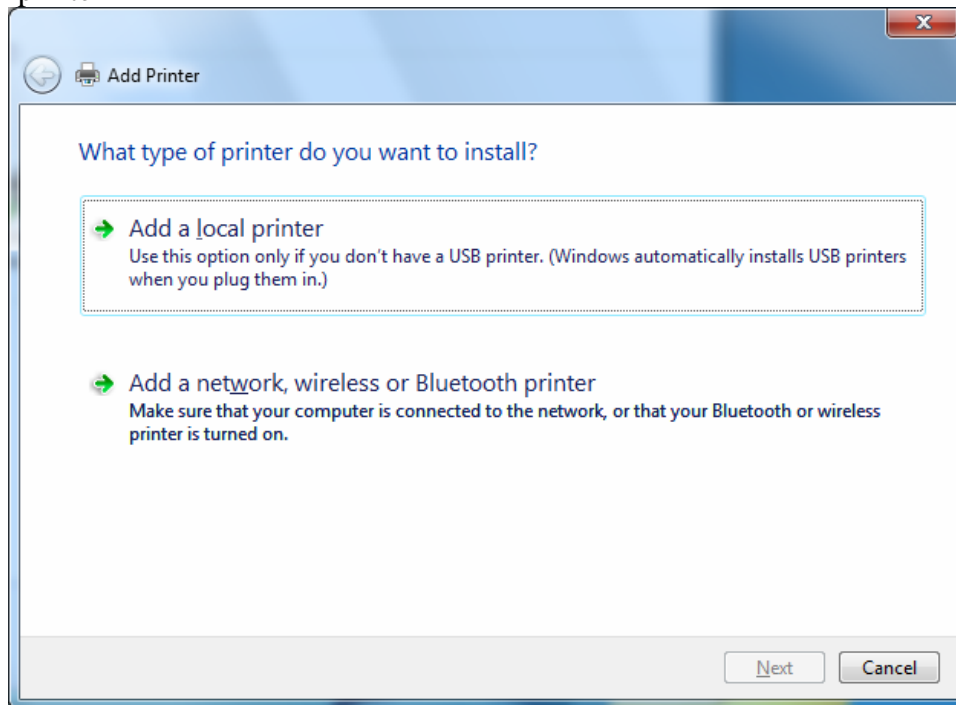
Click “Start” → Devices and Printers



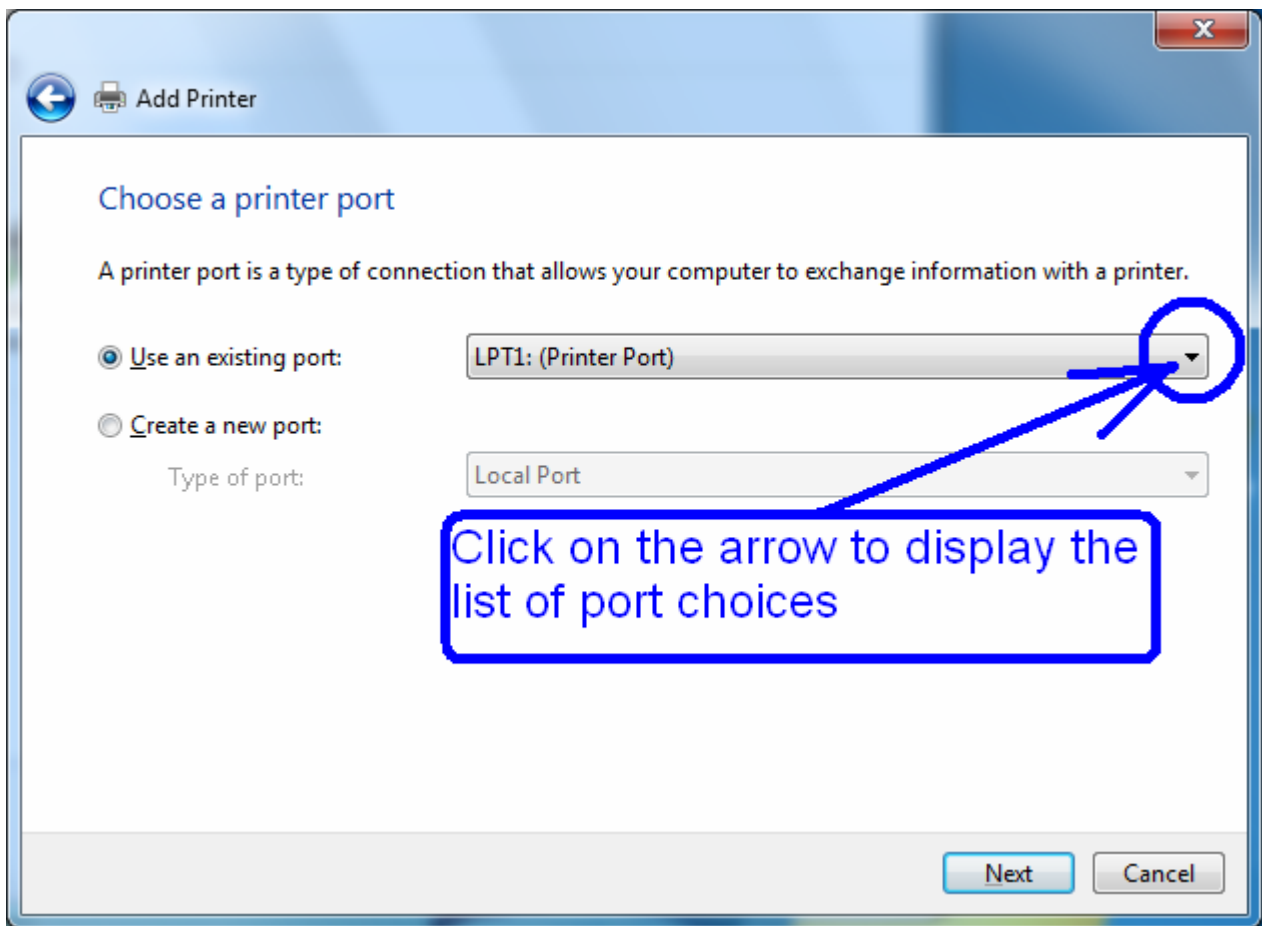
You should see this window open up



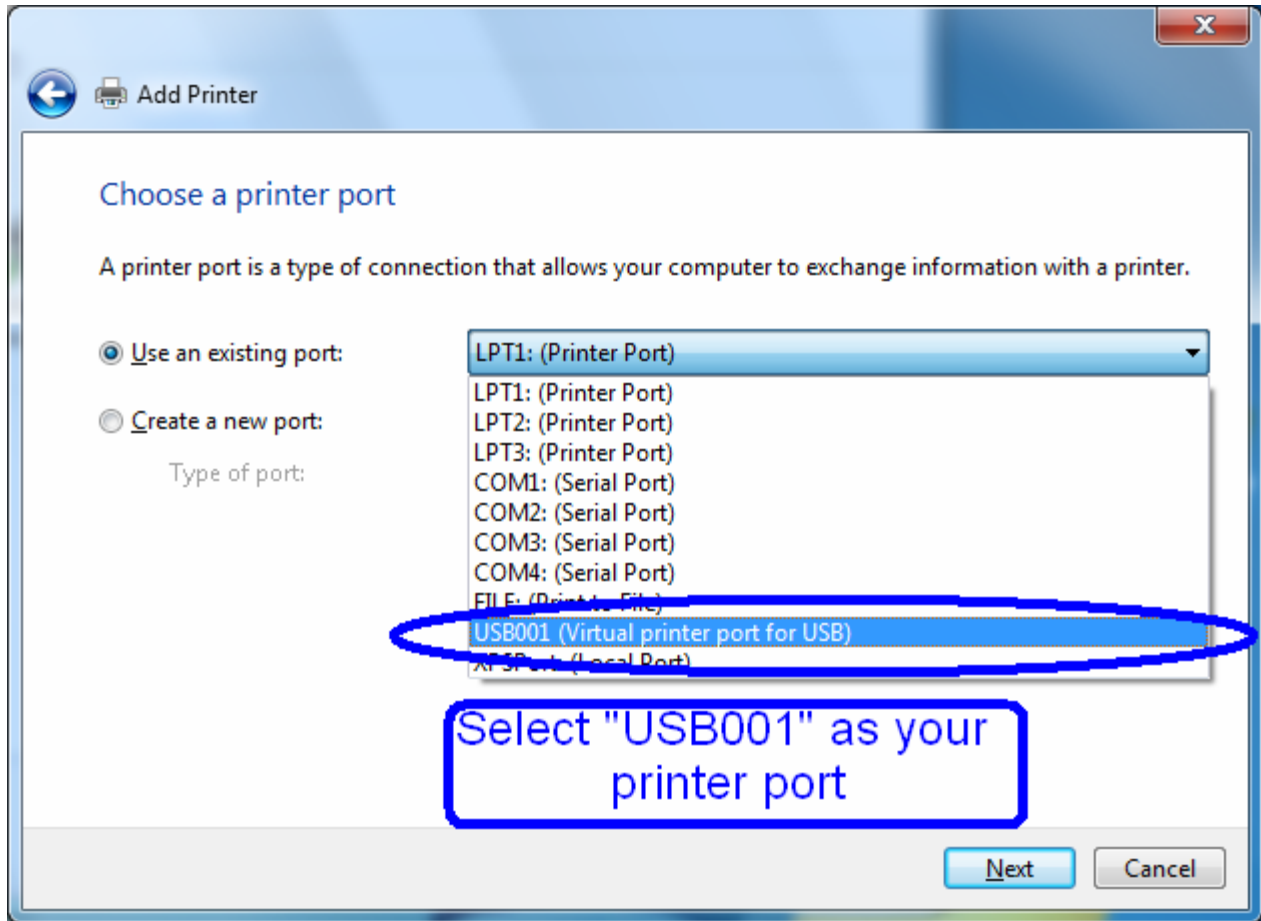
Click on “Add a local printer”



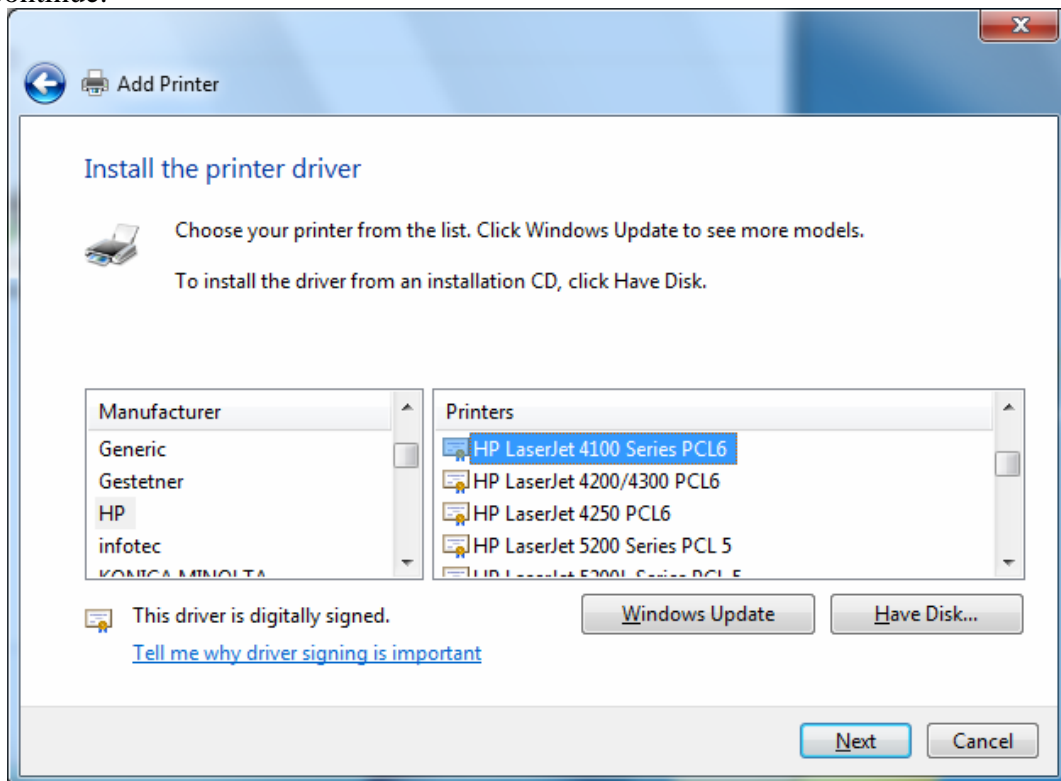
Click the arrow to select the port



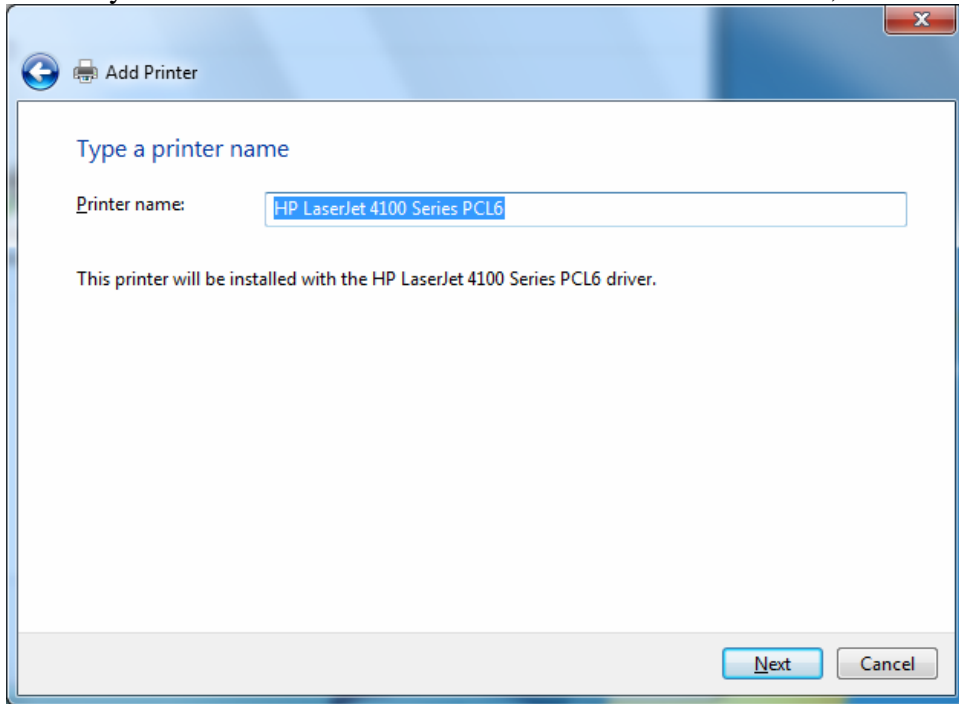
Select "USB001" as your printer port.



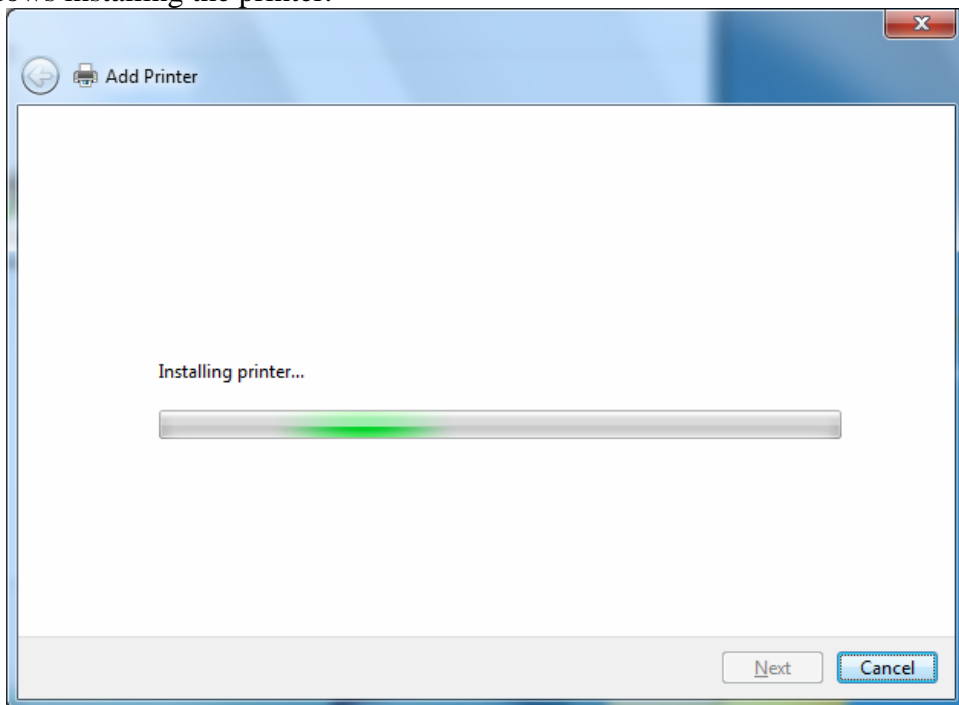
Select the brand of printer you have on the left pane, then select the model on the right pane. If you do not see your printer on this list, go to the printer's manufacturer's website and download the drivers for your printer. Click "Next" to continue.



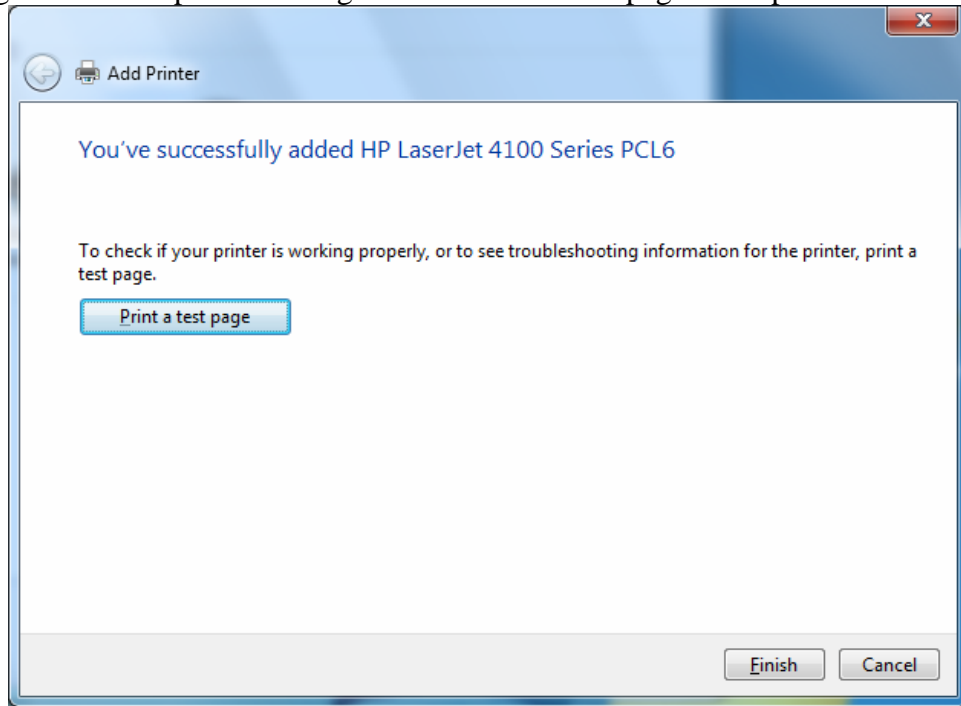
You may name the printer so you can find it easier on a list. Click “Next” to continue,



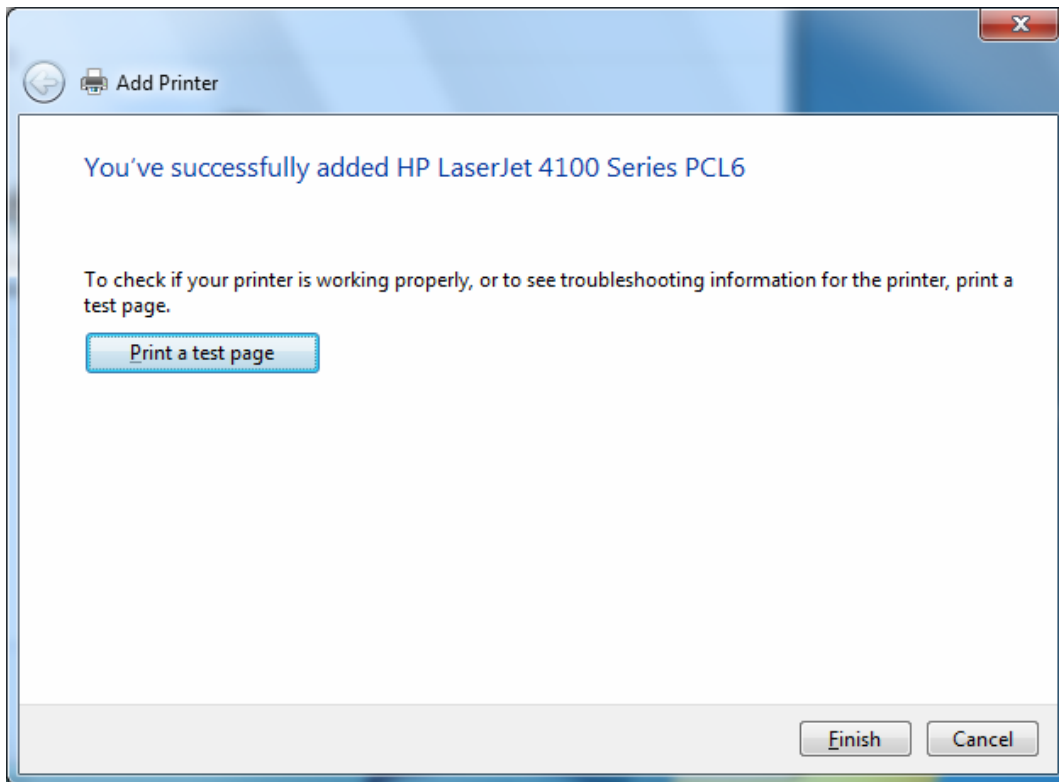
You should see Windows installing the printer.



Please print a test page to confirm printer settings. Click “Print a test page” then press “Finish” to continue.



You should get a window similar to this one displaying that your printer is successfully installed.



You should see your printer in the “Printers and Faxes” list.

