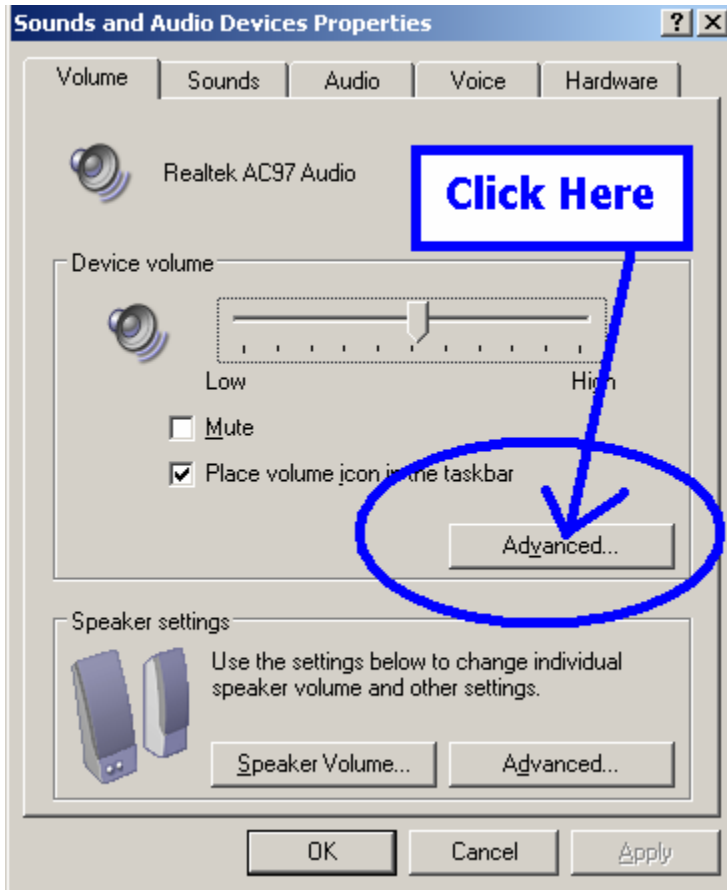


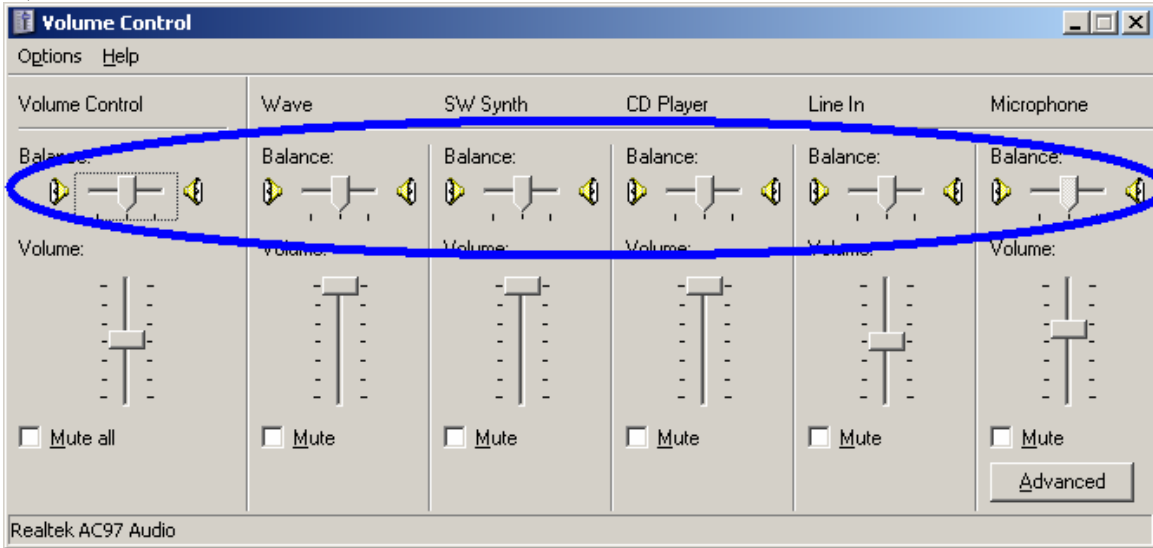
Please do this for me:

- 1.) Click “start” → “RUN” and inside the open box, please type in MMSYS.CPL then press the OK button.
- 2.) You should see the “Sounds and Audio Devices Properties” window open up. It should look like this:



Click on the “advanced” button as shown.

3.) You should see a window similar to this one:



Please make sure that every “balance” bar is in the center. This is your “right – left” balance. If one of them is all the way to the left, then only your left speaker will work.