

How to reprogram the extra buttons on your new inland mouse:

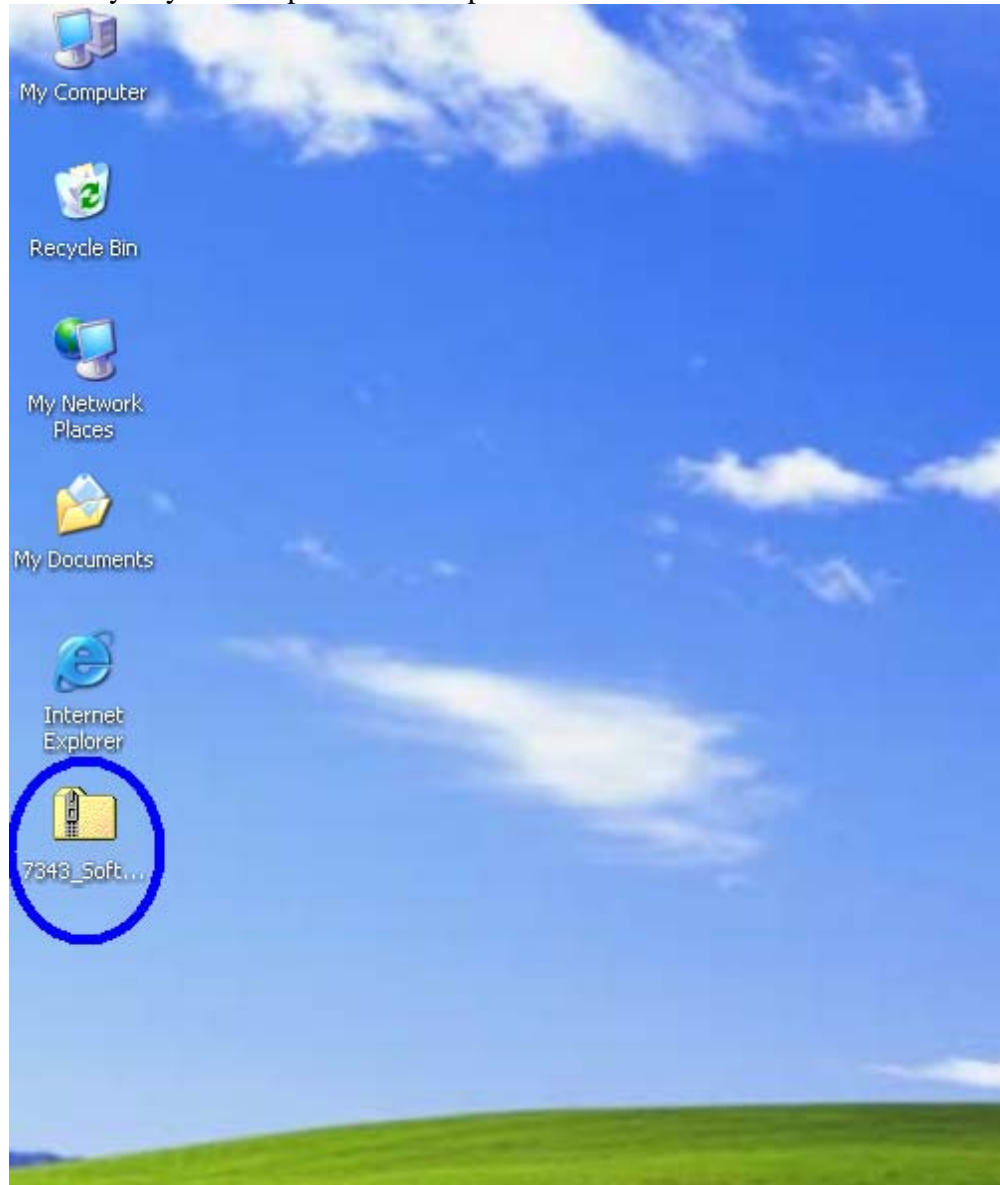
Step one: Software

Download the software from inland Products website:

http://www.inlandus.com/drivers/7343_Software.zip

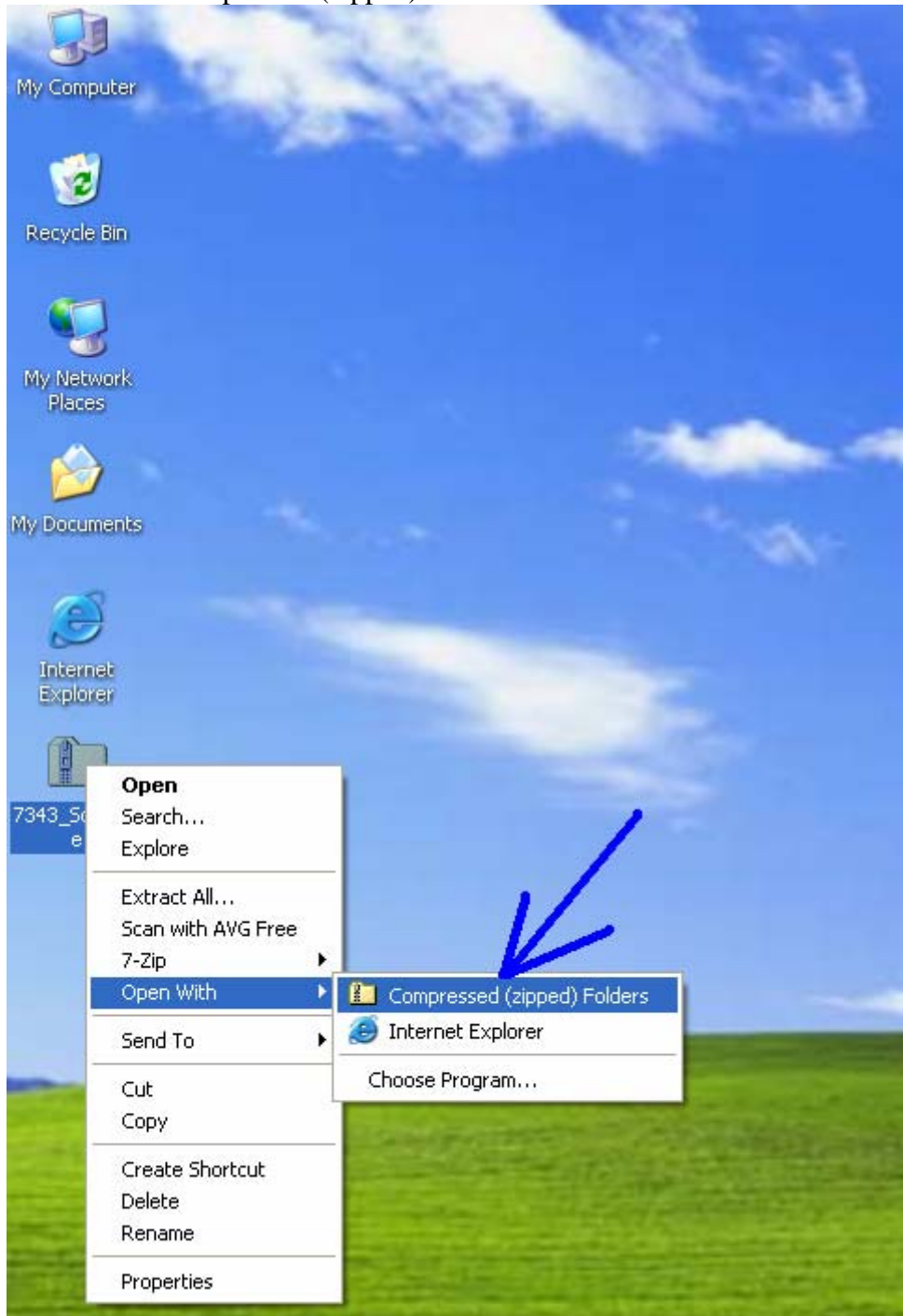
Step two: Pick the download destination

Make sure that when you pick your download destination, you are able to find it when it is completed. It may be easier to download it directly to your computer's desktop.



Step 3: Opening up the archive

XP has its own built-in unzipping program. You can use it by right-clicking on the archive and selecting “Open With” then moving the mouse to “Compressed (zipped) Folders.” Click on it.

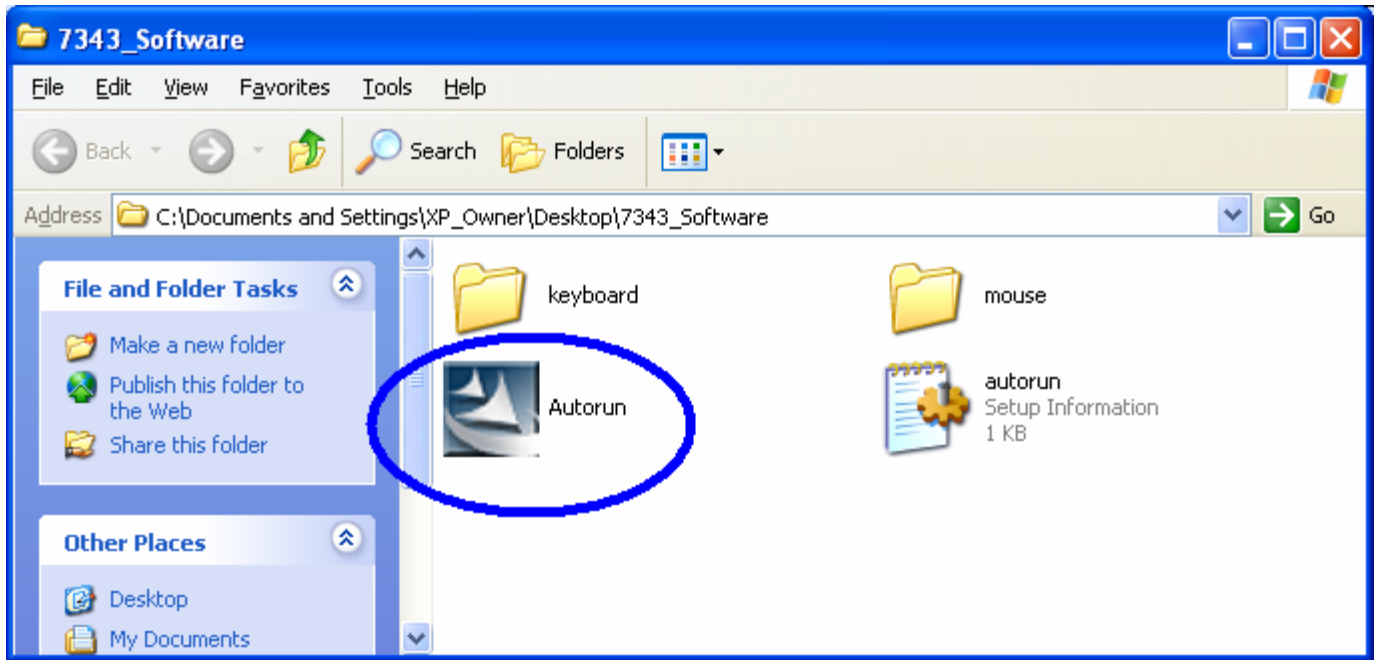


Step 4: Click “Extract all” on the dialog box
This will extract all the files into a folder on your desktop.

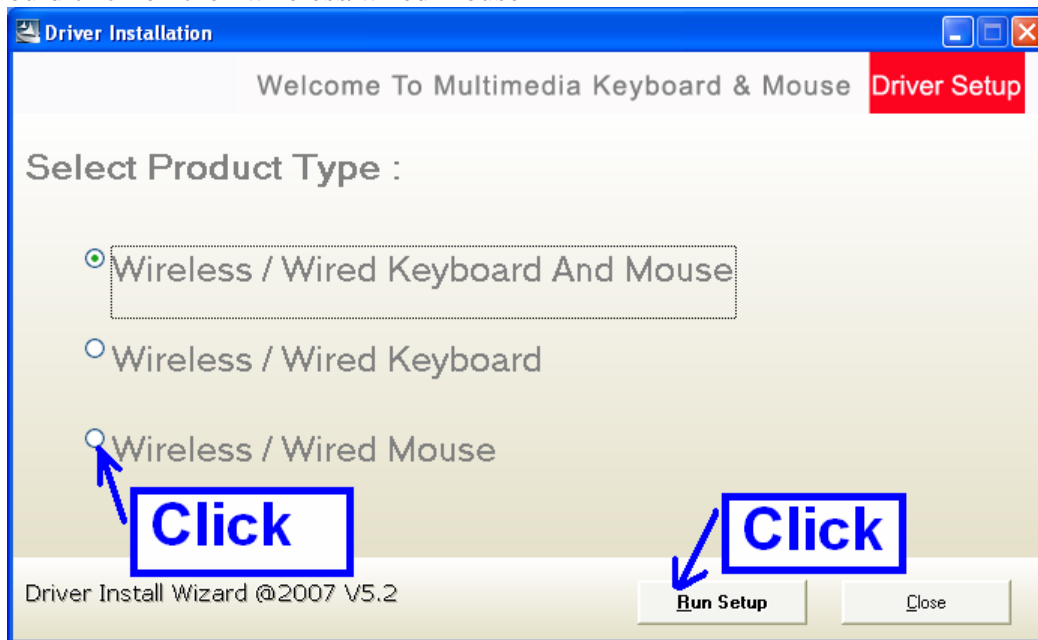


Step 5: Running the software

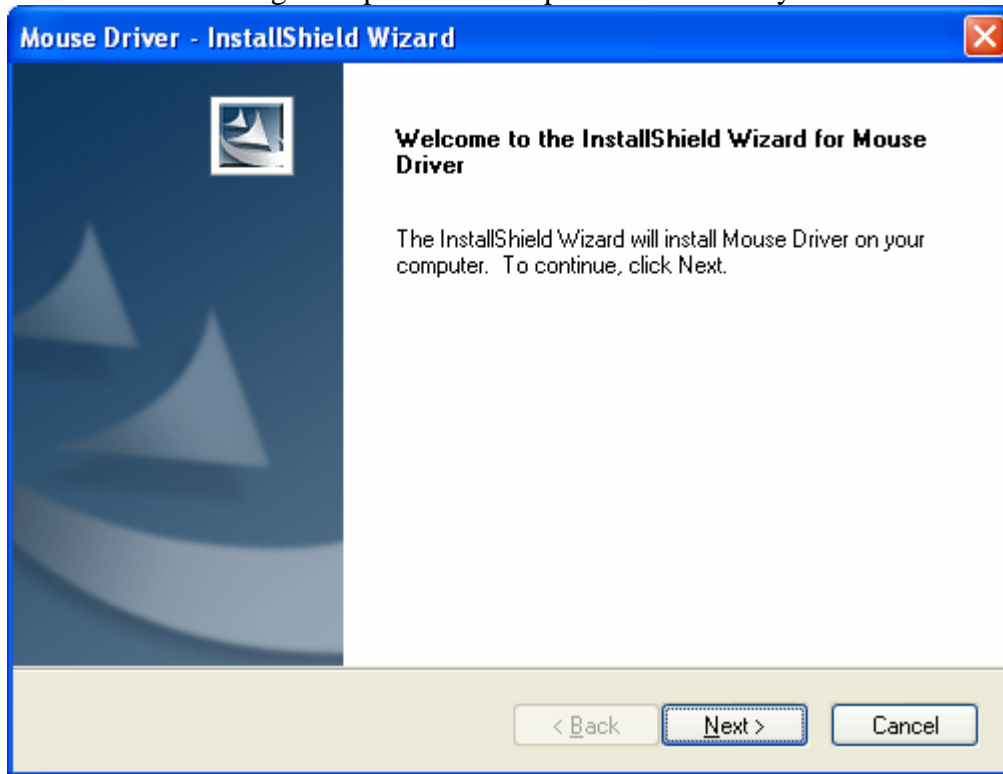
You should see the archive file open-up in a familiar window. The next step is to double-click on the “Autorun” file shown below.



Step 6: Select the mouse/keyboard setup you purchased
In this step, you would click on the “wireless/wired mouse”



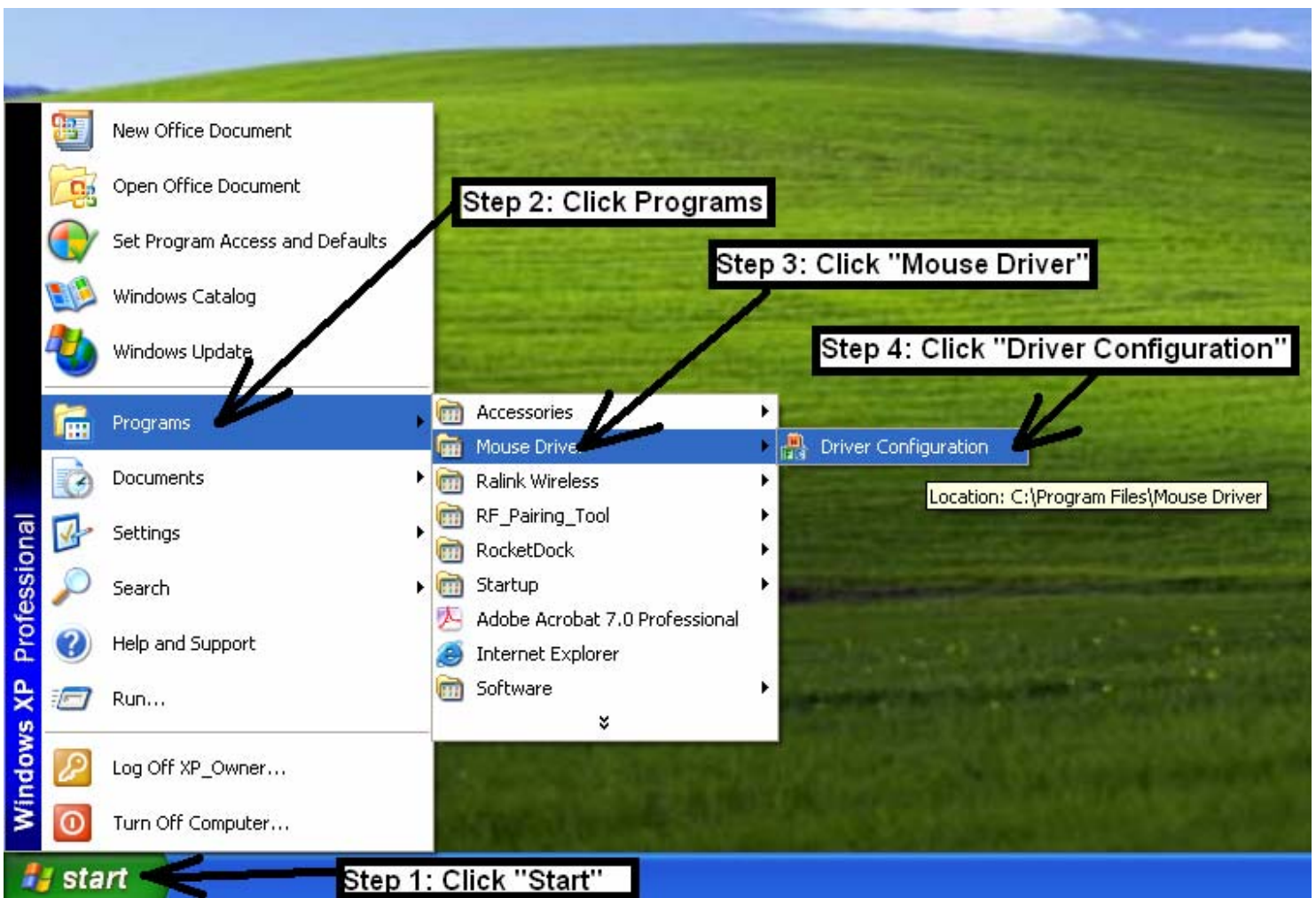
Step 7: You will see the installer running a script. Let it complete. It will take you to this screen:



Click on "Next" then "Next". Your software is now installed.

Step 8: Run the software

Follow the steps below to find the installed software.



Step 9: Find the mouse icon next to your clock
Please see the photo below



Step 10: Configuring the mouse

Mouse Properties



Hardware

Config of the mouse wheel

About Mouse Driver

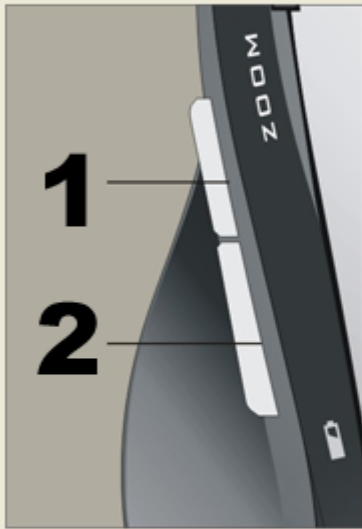
Config of mouse button

Pointers

Pointer Options

Wheel

Config of the mouse button



1. Back Command

2. Forward Command

These options will allow you to customize the functions of the side buttons

Restore to default

Speed of double click

Slow



Fast



OK

Cancel

Apply