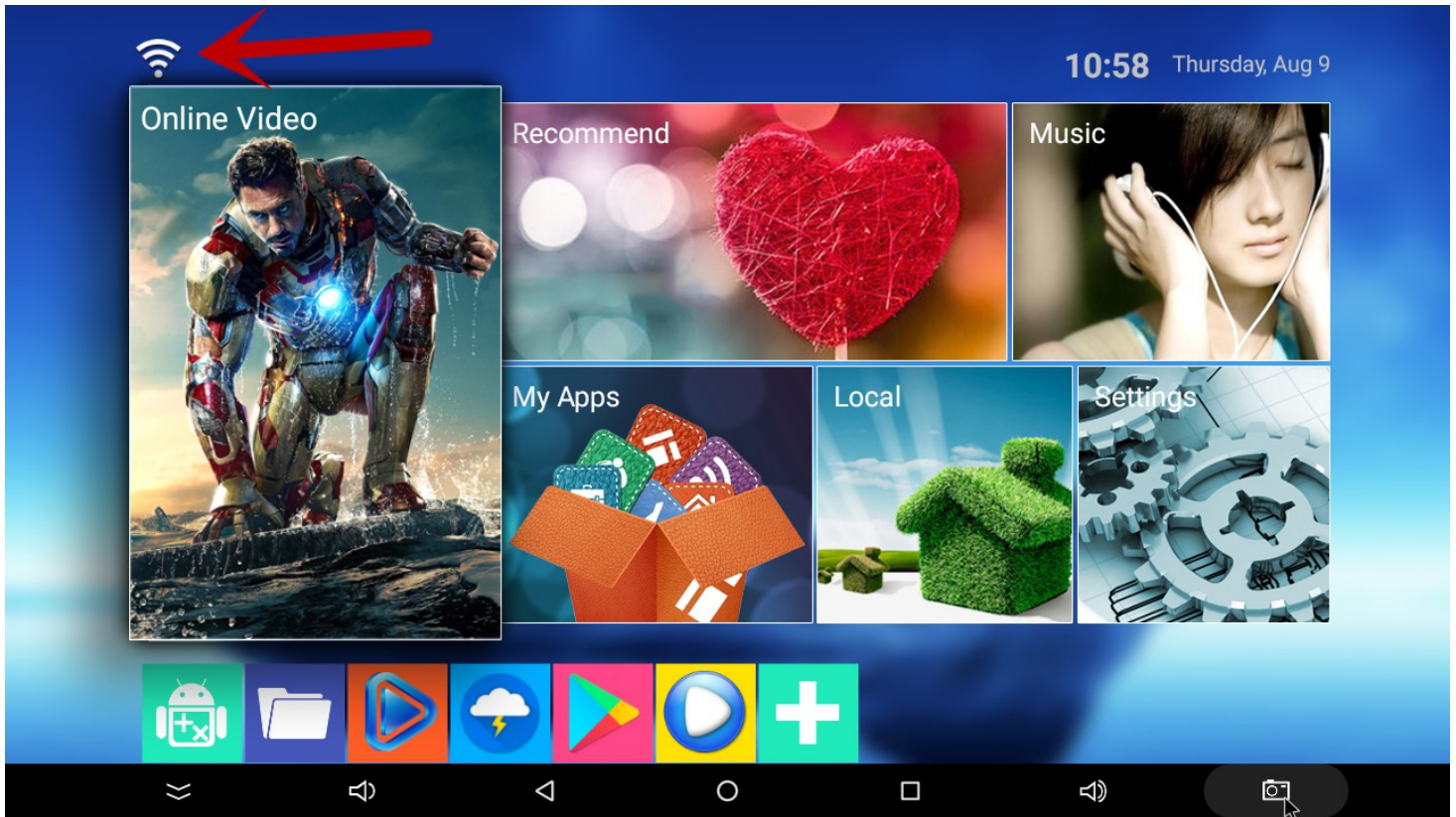


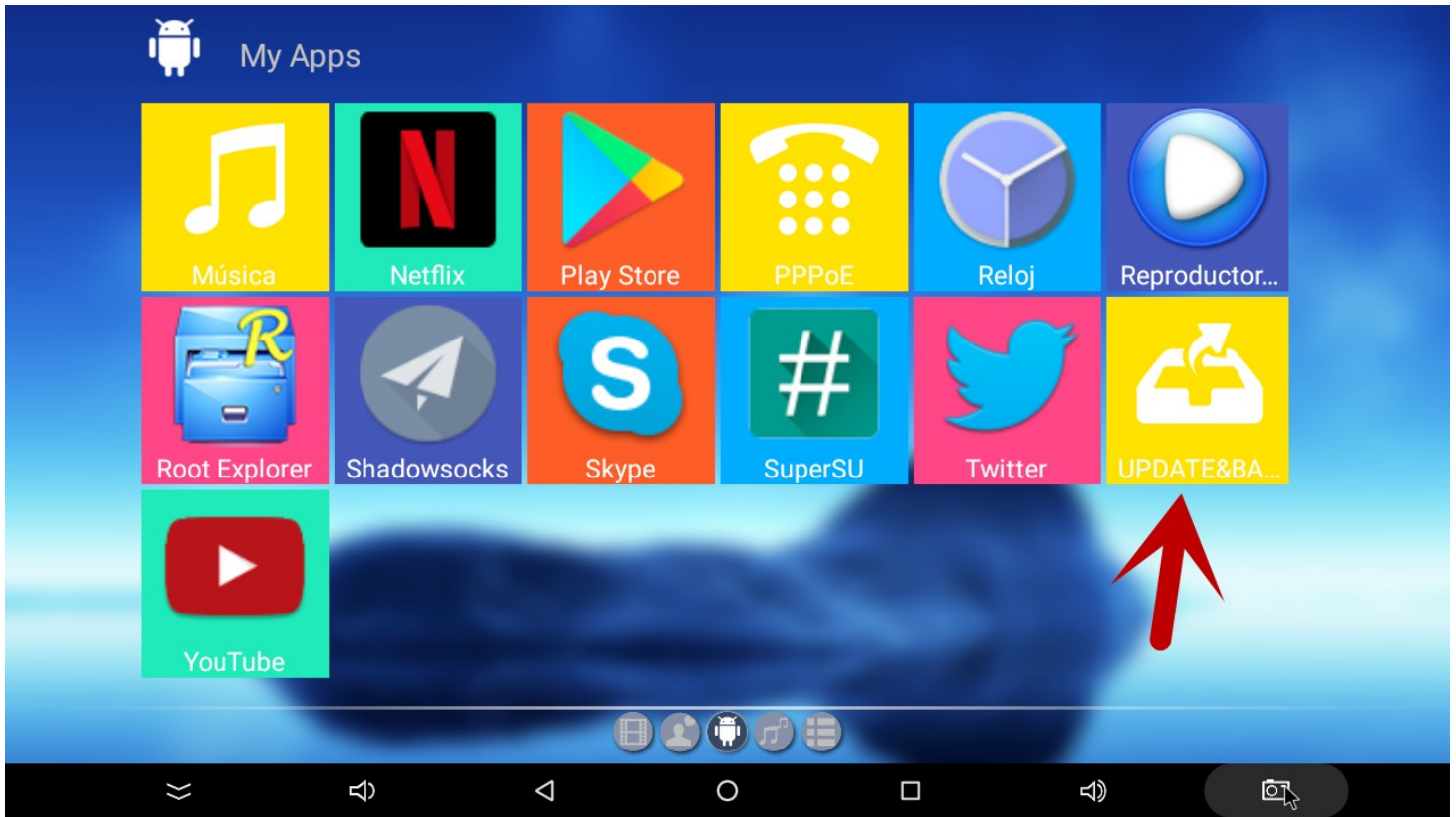
Step 1: Powered on 88139, and make sure to connect to the network:



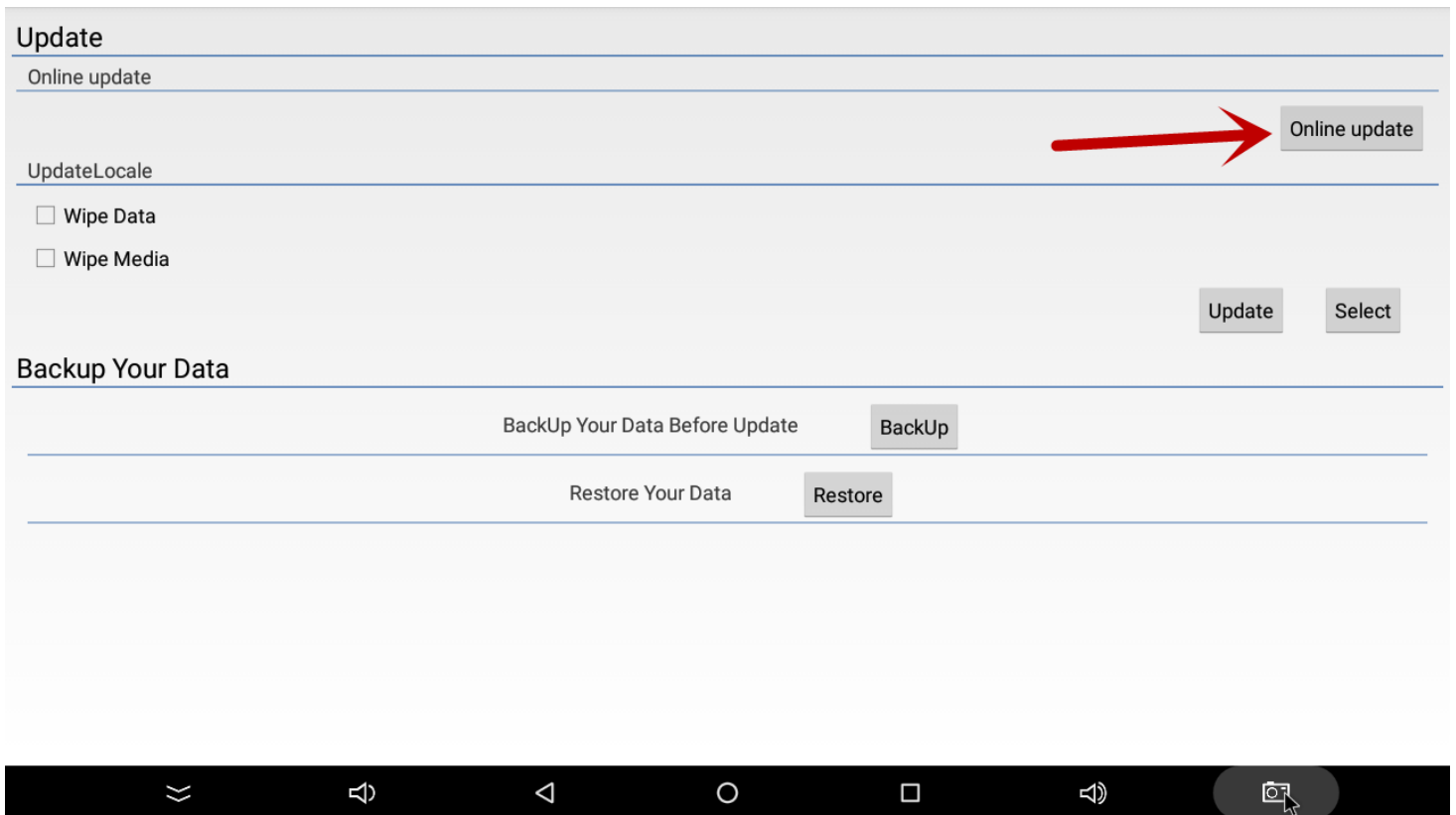
Step 2: Select "My Apps" icon at the interface



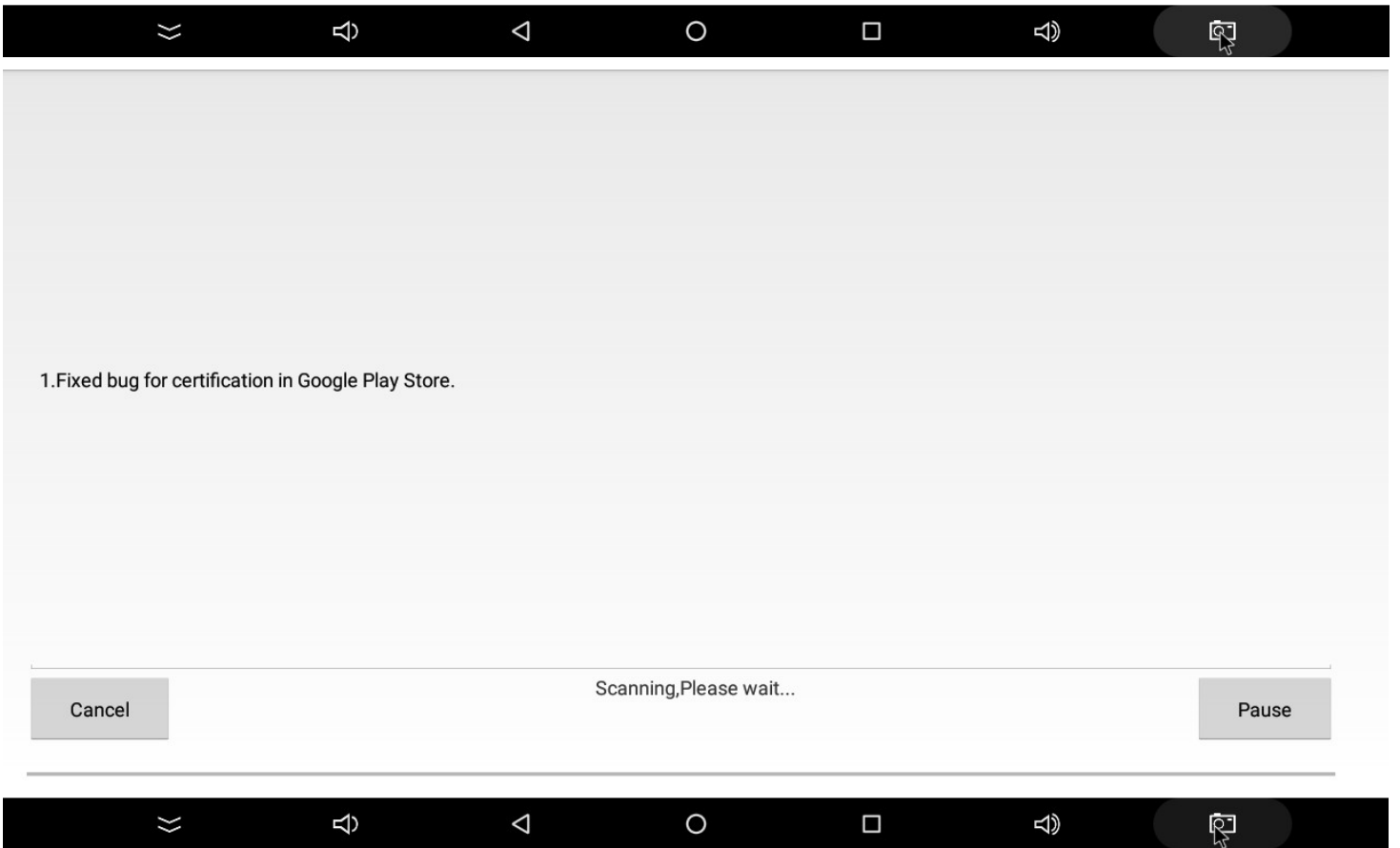
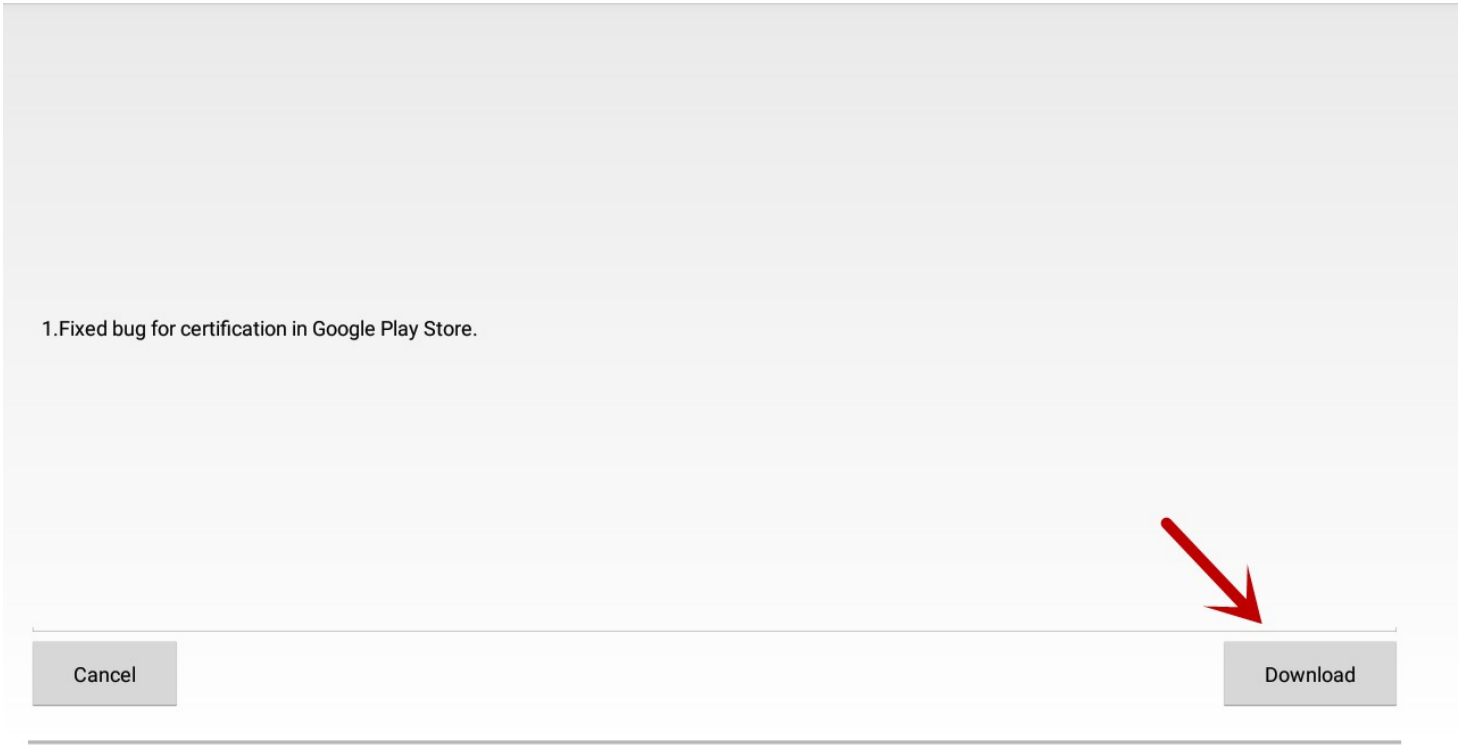
Step 3: Select "UPDATE&BA..."



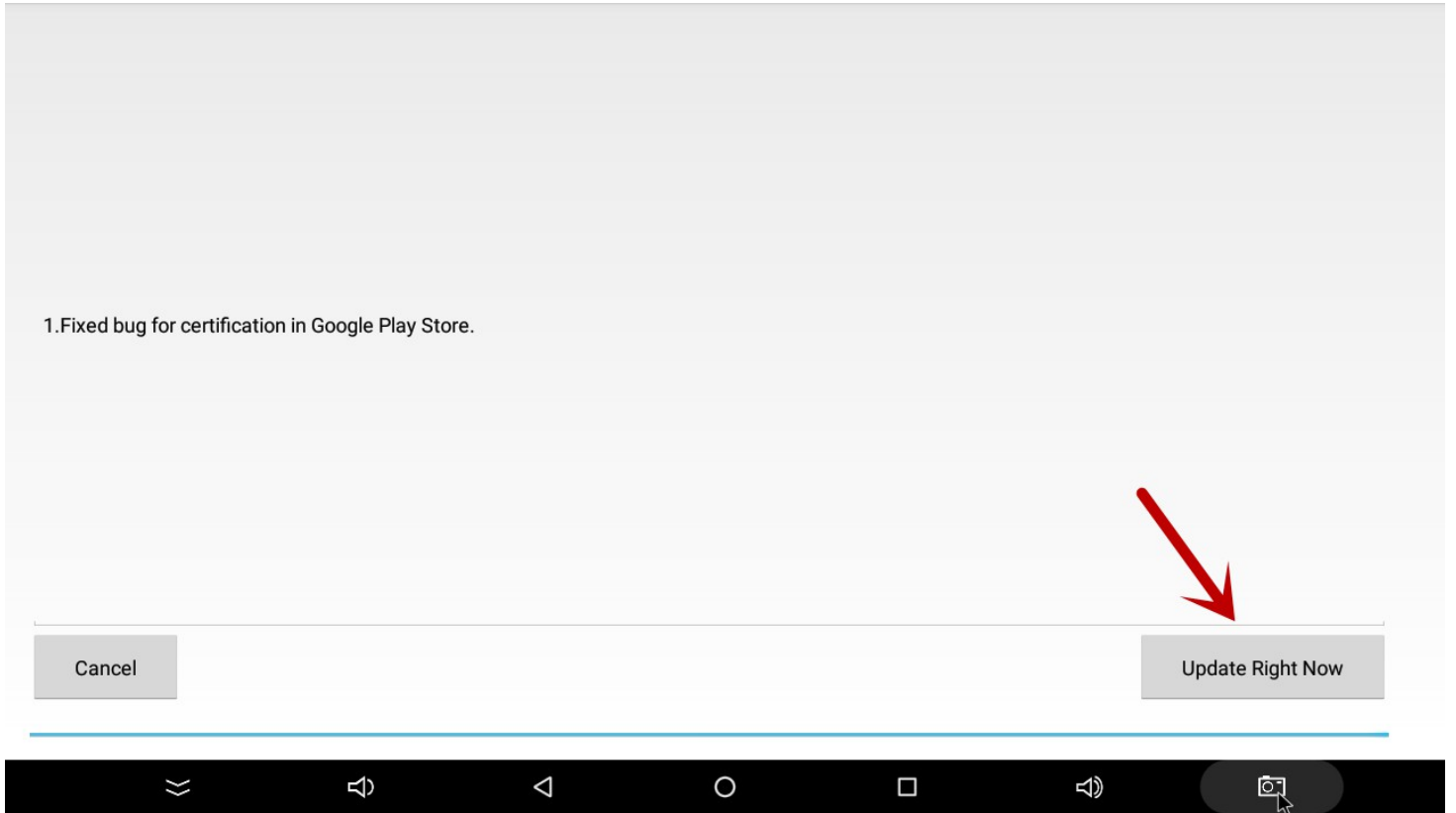
Step 4: Select "Online update"



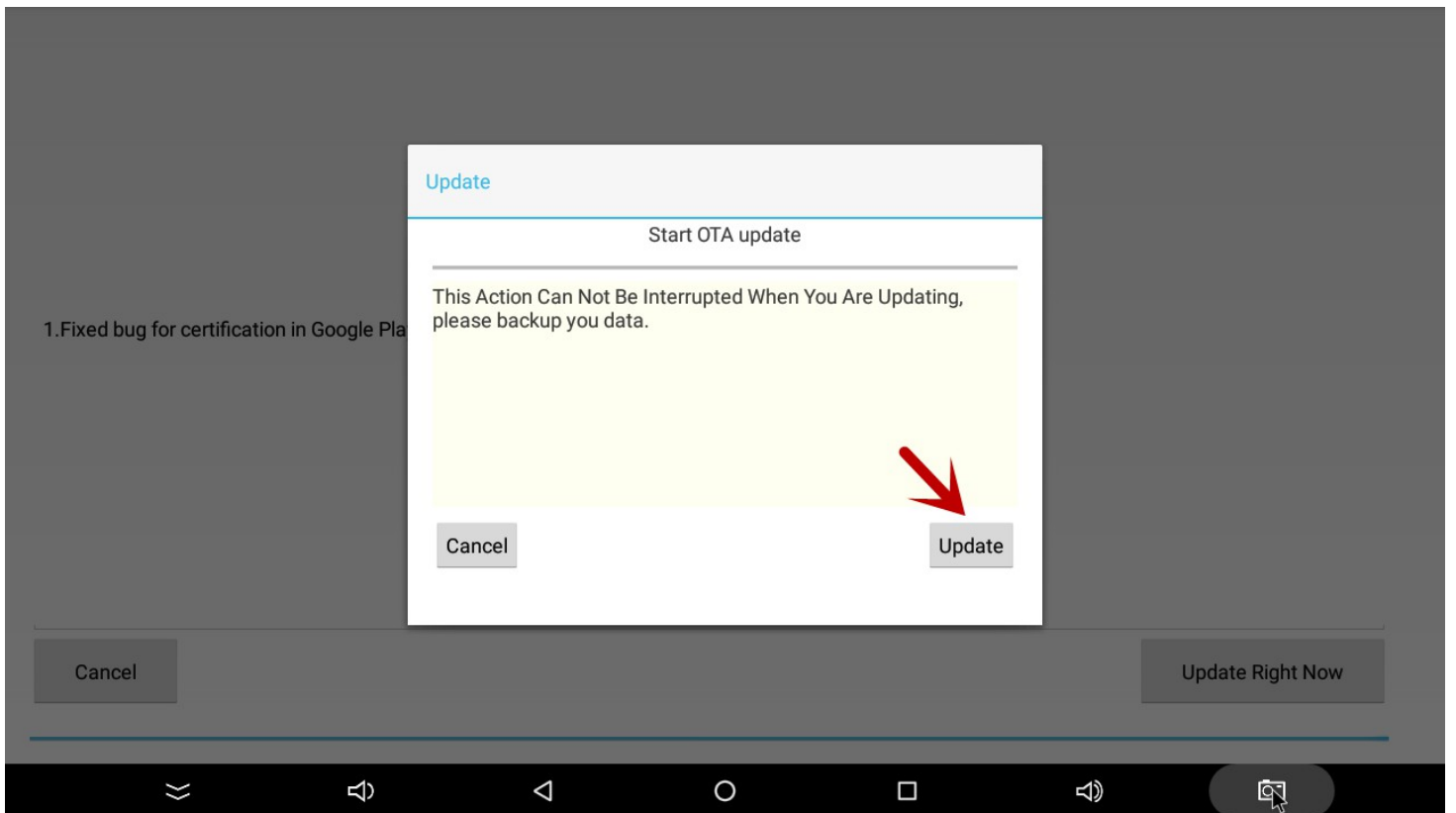
Step 5: Select "Download", and wait for the download



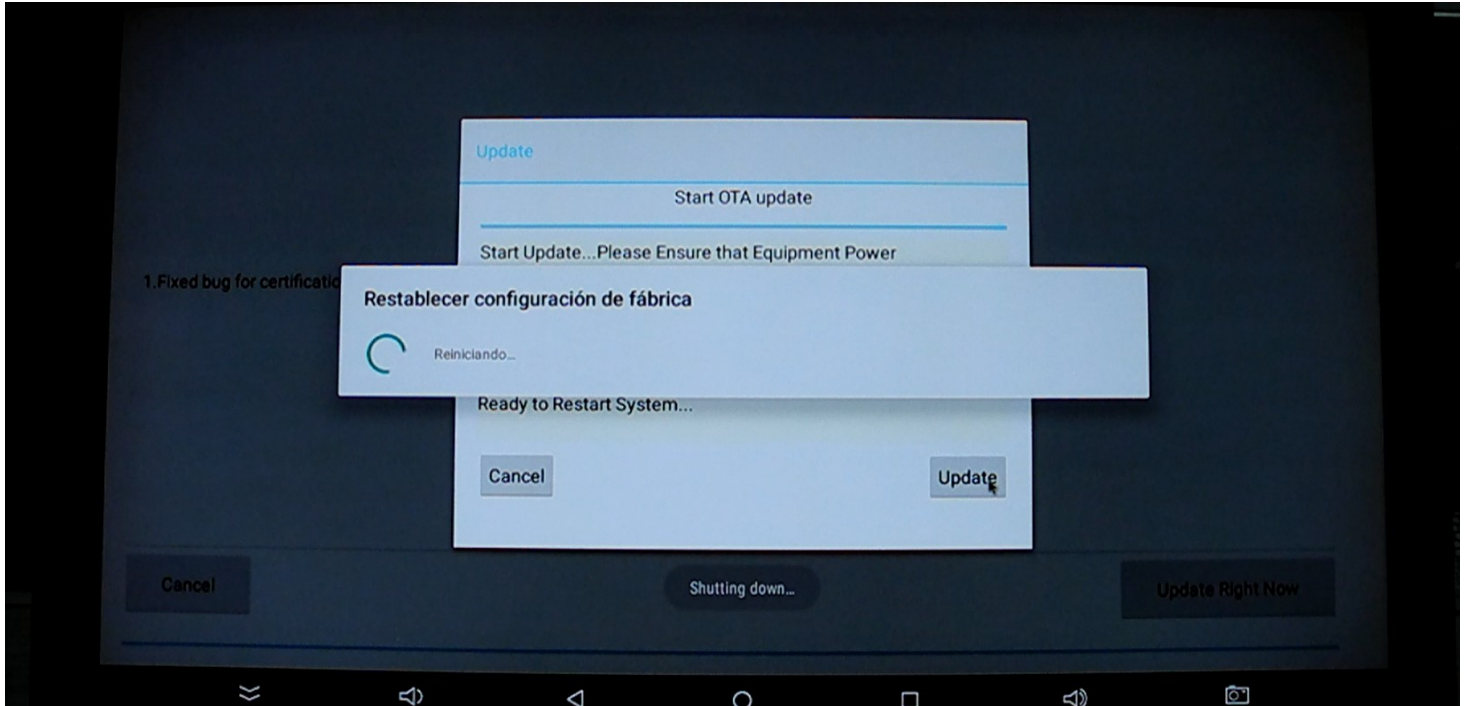
Step 6: Select "Update Right Now"



Step 7: Select "Update"



Step 8: Update is in progress, in this process, we must **ensure that 88139 can't be powered off**. After the upgrade is completed, the machine will restart automatically. After the restart, Google and google play can be used normally!



Remarks:

- 1) The power supply must be stay powered on during the upgrade process. If the power cut off, it may become a “dead machine”;
- 2) Because there are too many TV BOX needs to be upgraded, the original back-end server is already fully loaded, and the time to get to our fastest upgrade machine is (China time): August 13 to August 18, at this time If there are any machines that have not been upgraded in the segment, please let us know 1-2 days in advance, I will give you an appointment for the next upgrade period.