

How to pair/repair your new 2.4GHz wireless mouse and keyboard.

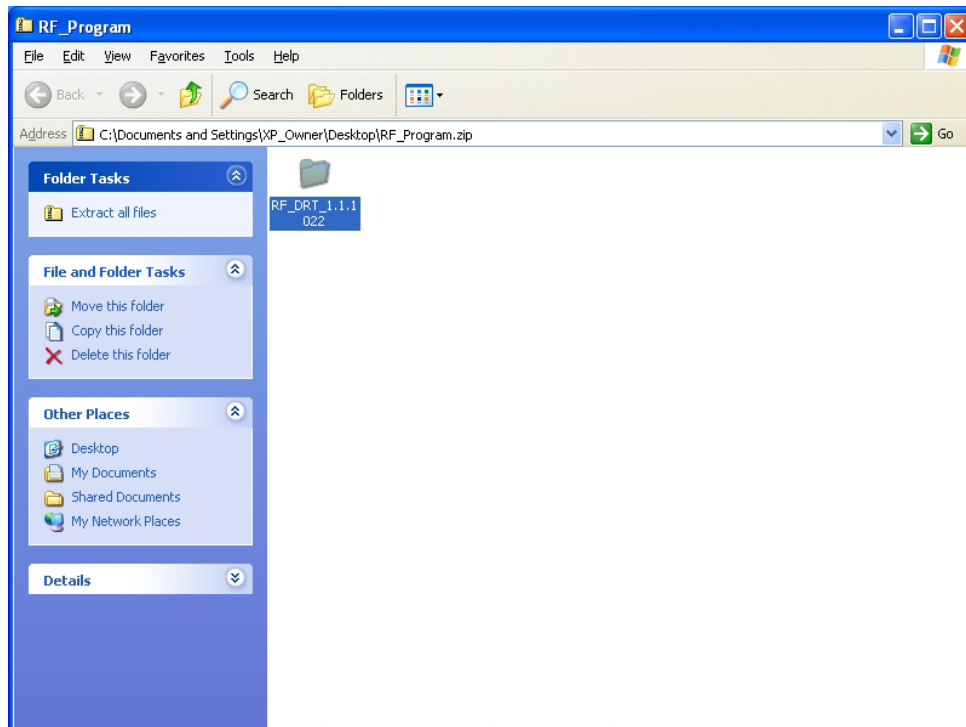
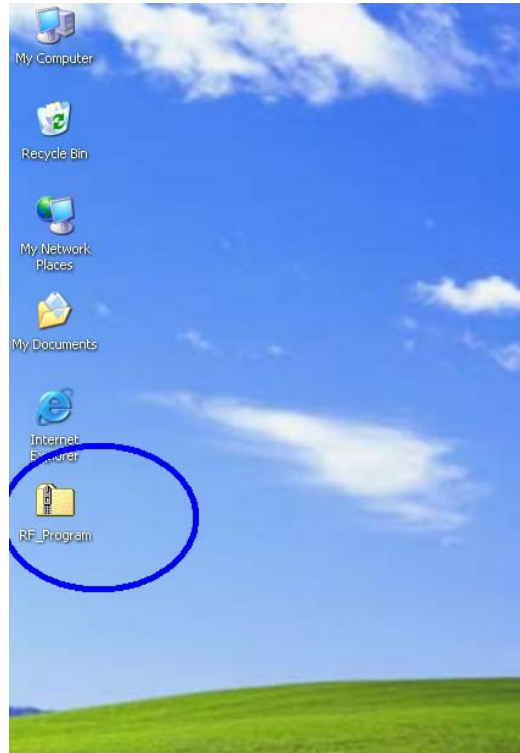
Step 1: Download the software:

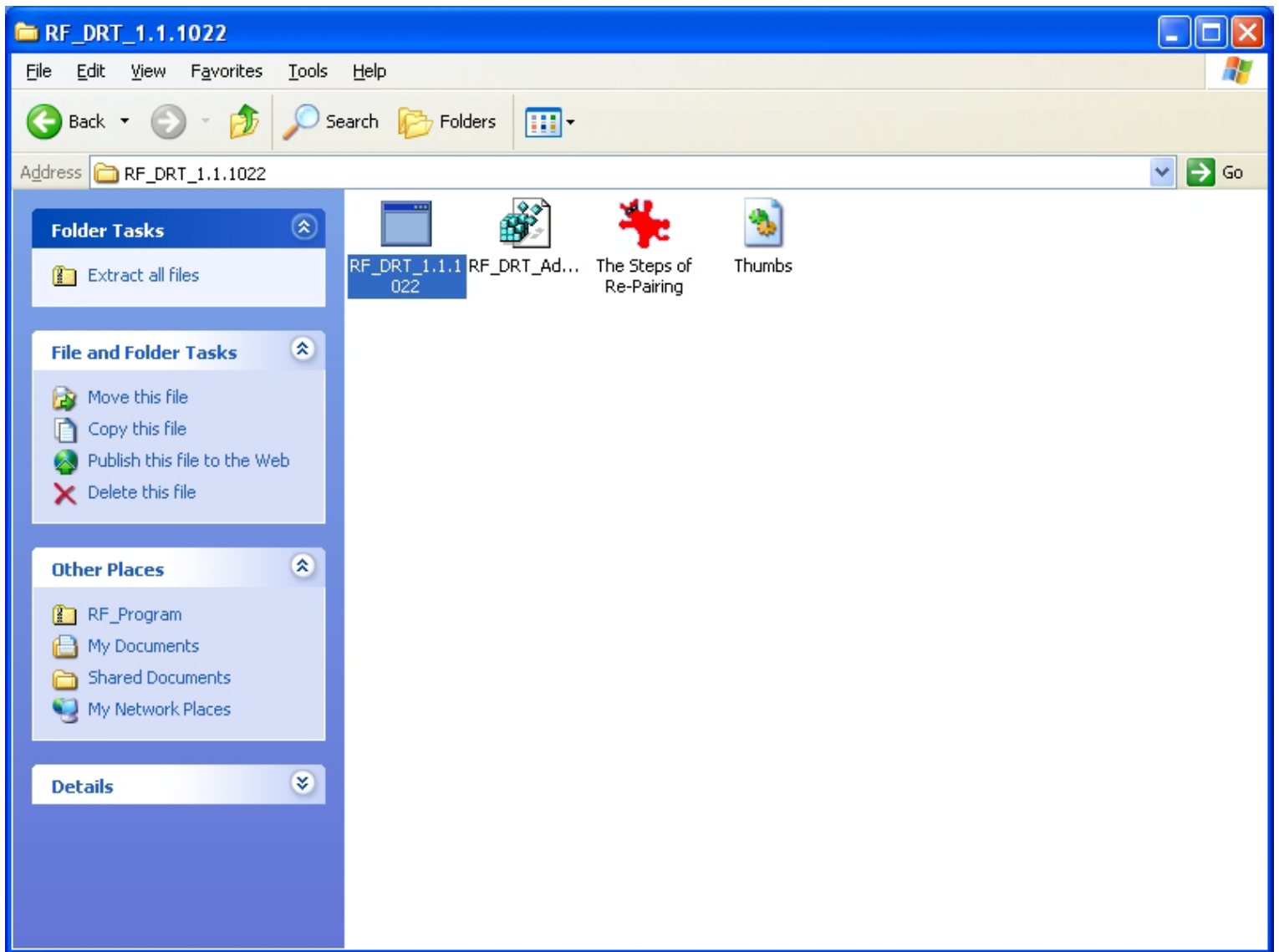
[Download Now](#)

Step 2: Select the download destination to your desktop.

Step 3: Locate the downloaded software

Step 4: Open the download





Step 5: Continue opening the folders until you find the installer. Please see highlighted file. Double-click on it.

Step 6: You may get a warning from XP. This is normal, click RUN.



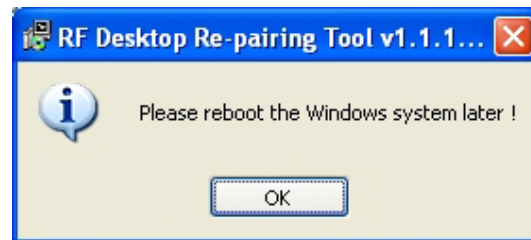
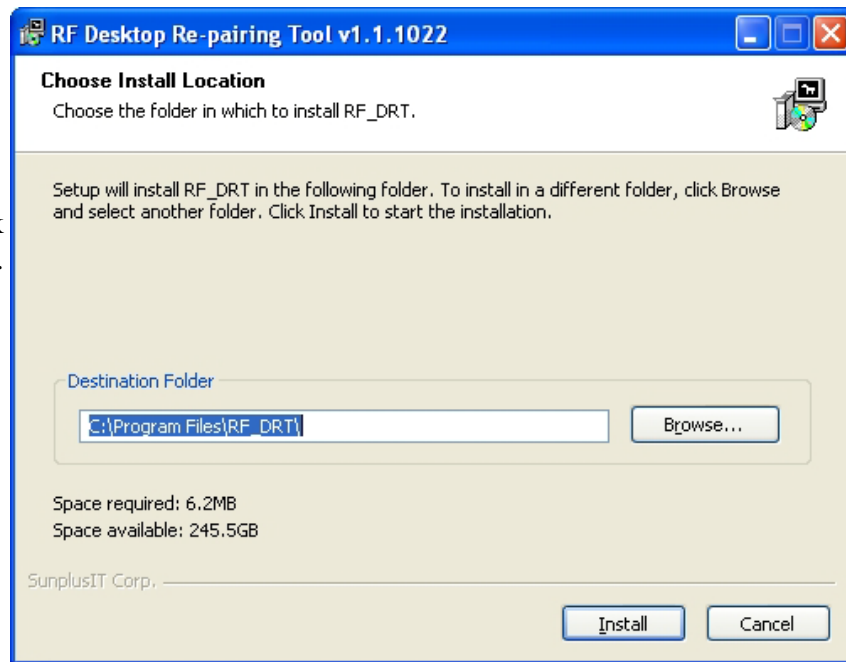
Step 7: Pick your language. This is your preference, pick the language you are most comfortable with.



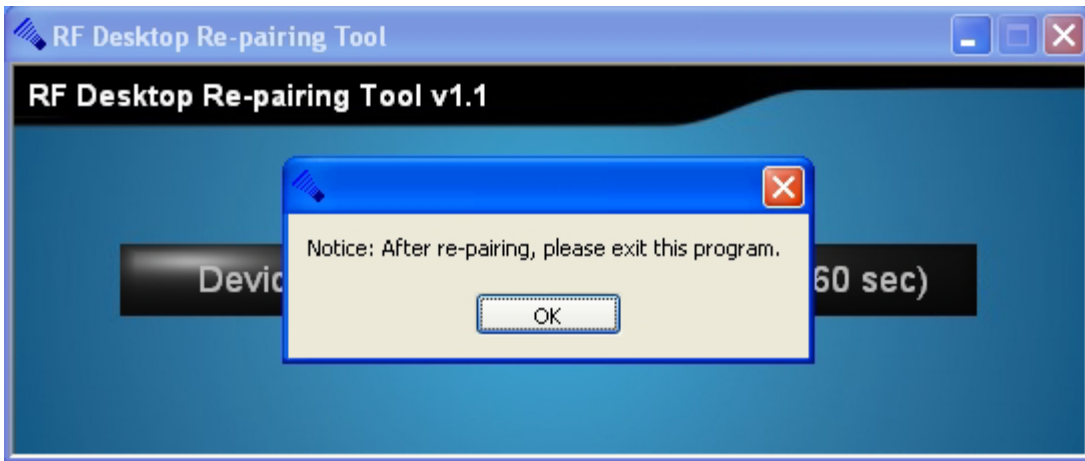
Step 8: Pick the destination where the software will get installed.

Step 9: The software will ask you to reboot your computer. Click on “OK” and reboot your computer.

Step 10: Find the “RF Desktop Re-pairing Tool” icon on your desktop. Double-click on it.



Step 11: You will get a notice, click OK.



Step 12: Insert the USB RF receiver into an available USB port directly on your computer.



Step 13: You should see the two keys light-up yellow, as shown.



Step 14: Click on the “Bind Key (60 sec)” button. This will give you one minute to complete the next two steps.

Step 15: Force your mouse into pairing mode by:

- a.) Removing the battery
- b.) Reinsert the battery
- c.) Hold down the right, left, and middle button for three (3) seconds.

Step 16: Force your keyboard into pairing mode by:

- d.) Removing the battery
- e.) Reinsert the battery
- f.) Hold down the ESC & Pause/Break keys for three (3) seconds.

Step 17: Enjoy your wireless mouse and keyboard.

If you find any errors or mistakes, or if you want to send your comments, please send them to Jason@inlandproduct.com or call at (714) 525-9800 ext. 101. Thanks for choosing inland Products!