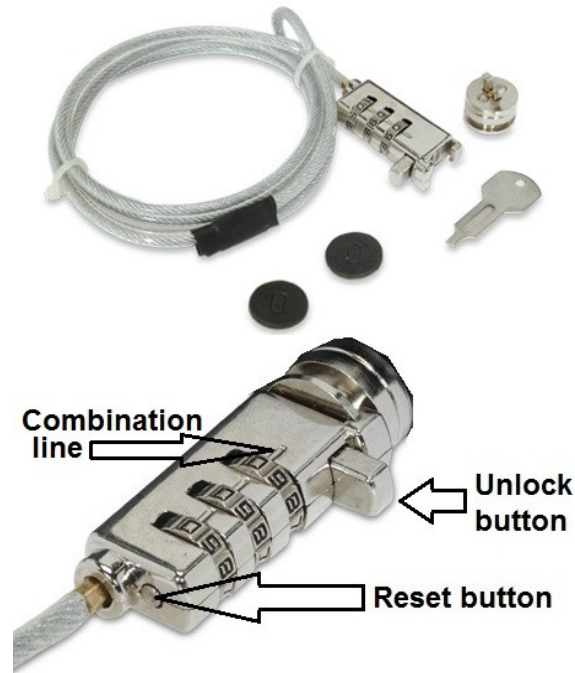
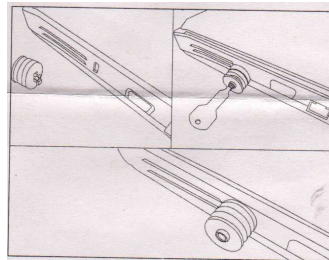
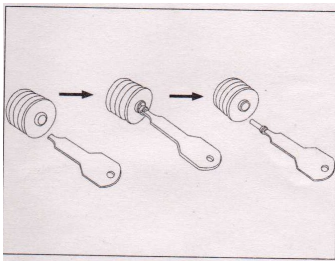


Notebook Security Lock Instructions

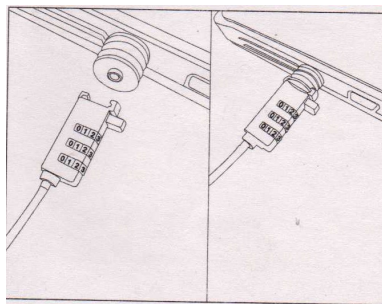


Instruction:

1. Set your lock to the existing combination
(The default combination is 0-0-0)
2. Hold down the reset adjusting button with key and select your personal combination by turning the dials and release the button.
3. Once your new combination has been set be sure to take note of your combination and double check it is the pin you desire
4. Install lock nut to notebook by using key. Turn clockwise to tight. (Add soft rubber washer to nut before installing on notebook)



5. The unlocking button can be used to insert and remove the lock from you notebook.



6. With your correct combination showing, hold down the unlocking button and insert or remove the lock. Move dials to re-lock.